

Rotating cleaning nozzle MicroSpinner 2

Series 5M2



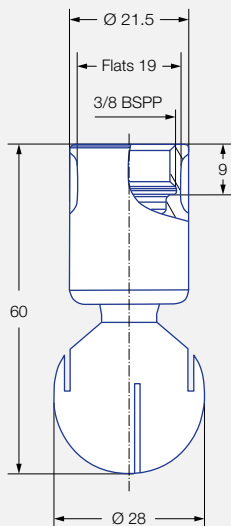
Features:

- Hygienic design
- Suitable for high temperatures
- Made entirely of stainless steel

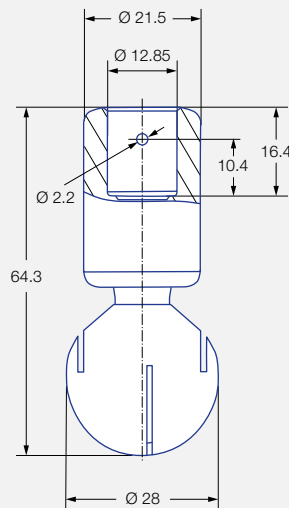


**ATEX version
available on
request**

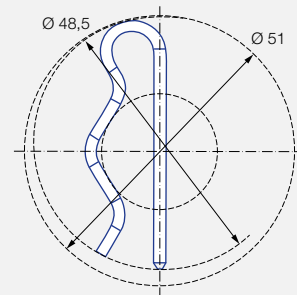
Series 5M2



Female thread



Dimensions of the
slip-on connection according
to ASME-BE (OD-tube)



Dimensions of the
slip-on connection
top view

Max. tank diameter [m]	0	1	2	3	4	5	6	7	8	9
------------------------	---	---	---	---	---	---	---	---	---	---



**Cleaning
efficiency class**
2



Max. temperature
250 °C



Installation
Operating in every direction
possible



Bearing
Double ball bearing made
of stainless steel 316L



Material
Stainless steel 316L



**Recommended
operating pressure**
2 bar



Filtration
Line strainer with a mesh
size of 0,1mm/170 mesh






Adapter
3/8 BSPP is compatible
with HygienicFit

Function video

www.lechler.com/de-en/medialibrary
Or scan the QR Code.



Spray angle	Ordering number			Narrowest free cross section Ø [mm]	V̇ water [l/min]				Max. tank diameter [m]
	Type	Connection			p [bar] (p _{max} = 7 bar)				
		3/8 BSPP	1/2"-Slip-on		1.0	2.0	3.0	at 40 psi [US gal/min]	
 60°	5M2.952.1Y	AF	TF05	1.5	16	23	28	7	–
	5M2.042.1Y	AF	TF05	3.0	28	40	49	12	–
 180°	5M2.004.1Y	AF	TF05	0.9	22	32	39	10	1.8
 360°	5M2.969.1Y	AF	TF05	0.8	18	25	31	8	1.7
	5M2.049.1Y	AF	TF05	0.9	28	39	48	12	1.8

NPT thread, weld-on and further slip-on versions on request.

The max. tank diameter shown above applies for the recommended operating pressure and has to be seen as a recommendation.
The cleaning result is also affected by the type of soiling.

Operating with compressed air only for short-term usage. Operation above the recommended operating pressure has negative effects on the cleaning result and wear.

Information slip-on connection

- Pin made of stainless steel 316L included (ordering no. 05M.230.1Y.00.00.0).
- Depending on diameter of the adapter, the flow rate increase due to leakage between connecting pipe and rotating cleaning nozzle.
- Minimum insertion diameter (with mounted pin) is 48,5 mm

MicroSpinner 2

Example	Type	+	Connection	=	Ordering no.
of ordering:	5M2.952.1Y	+	AF	=	5M2.952.1Y.AF