

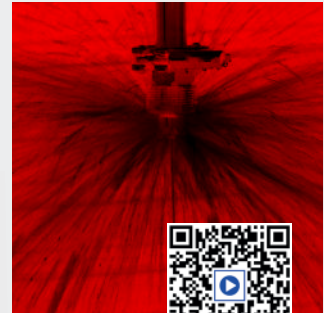


Pop-up rotating cleaning nozzles »PopUp Whirly« Series 5P2 / 5P3

NEW

Series 5P2 / 5P3

When a certain fluid pressure is reached, the rotating cleaning nozzle of PopUp Whirly is automatically extended from the enclosure. These free-spinning rotating nozzles can be installed flush in the tank wall. They are also suitable for cleaning pipes and for applications that use foam. They are of particular interest for applications in the food and beverage industry as well as for the pharmaceutical and chemical industry.



Function video

Scan the QR-code
or go to:
[www.lechler.de/
PopupWhirlyGB](http://www.lechler.de/PopupWhirlyGB)



Max. tank diameter [m]

0 | 1 | 2 | 3 | 4 | 5 | 6 | 7 | 8 | 9



Materials

Stainless steel AISI 316L,
stainless steel AISI 316Ti
(spring),
stainless steel AISI 316
(snap ring), PEEK (slide-
bearing), FKM (O-ring)

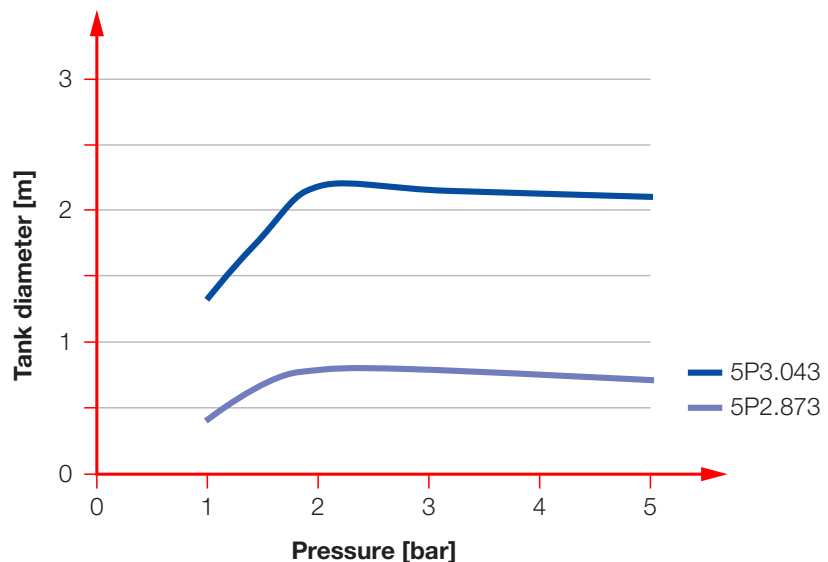


Max. temperature
140 °C



Recommended operating pressure

2 bar, 5P2: opening
pressure approx. 1.0 bar,
closing pressure approx.
0.5 bar,
5P3: opening pressure
approx. 0.9 bar,
closing pressure approx.
0.5 bar



Overview of the tank diameter, depending upon the pressure of series 5P2 / 5P3



Installation

Operation in every
direction is possible



Filtration

Line strainer with a mesh
size of 0.3 mm/50 Mesh

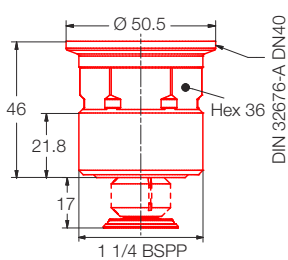


Bearing

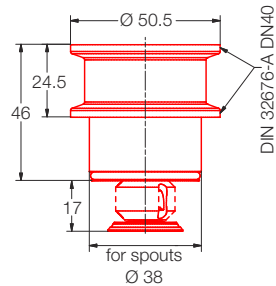
Slide bearing
made of PEEK



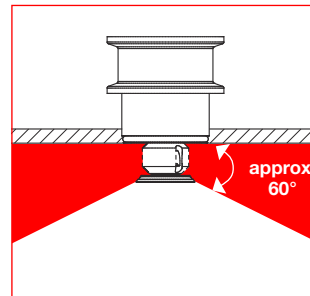
Series 5P2


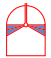


Male thread



Tri-Clamp

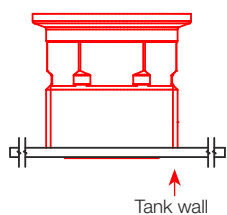


Spray angle 	Ordering no.	Tank connection		E Ø [mm]	V̇ [l/min]				Max. tank diameter [m]
		1 1/4 BSPP	Tri-Clamp		p [bar] (p _{max} = 6 bar)				
					1	2	3	at 40 psi [US gal./ min]	
	5P2.873.1Y.AP	●	-	1.1	10.6	15.0	18.4	5	0.8
	5P2.873.1Y.00	-	●	1.1	10.6	15.0	18.4	5	0.8
	5P2.923.1Y.AP	●	-	1.1	14.1	20.0	24.5	6	1.0
	5P2.923.1Y.00	-	●	1.1	14.1	20.0	24.5	6	1.0

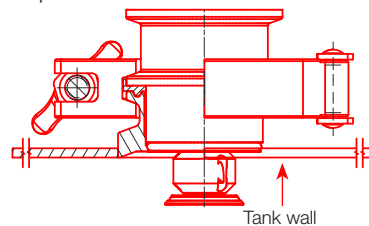
The maximum tank diameter shown above applies for the recommended operating pressure and is indicative only. The cleaning result is also affected by the type of soiling.

Nozzle installation

Via thread in idle position



Via Tri-Clamp in operating position



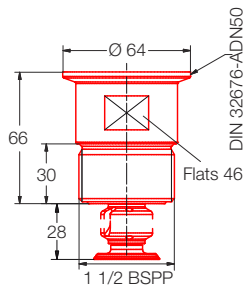
Information on operation

- Operation with compressed air only for short-term usage. Operation above the recommended operating pressure means higher wear and smaller droplets. This might have adverse effects on the cleaning result.

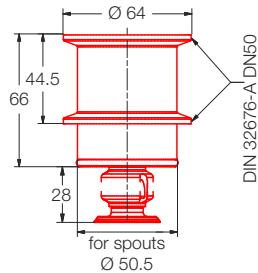


Pop-up rotating cleaning nozzles »PopUp Whirly« Series 5P2 / 5P3

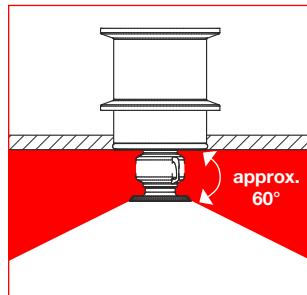
Series 5P3



Male thread



Tri-Clamp

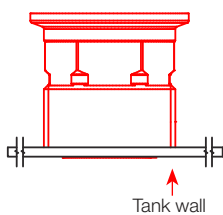


Spray angle	Ordering no.	Tank connection		E Ø [mm]	V̇ [l/min]				Max. tank diameter [m]
		1 1/2 BSPP	Tri-Clamp		p [bar] (p _{max} = 6 bar)				
					1	2	3	at 40 psi [US gal./ min]	
	5P3.043.1Y.AB	●	-	1.2	28.3	40	49	12	2.2
	5P3.043.1Y.00	-	●	1.2	28.3	40	49	12	2.2

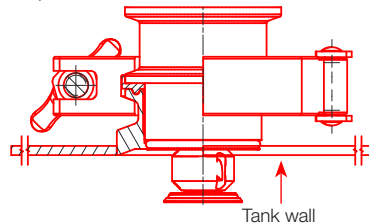
The maximum tank diameter shown above applies for the recommended operating pressure and is indicative only. The cleaning result is also affected by the type of soiling.

Nozzle installation

Via thread in idle position



Via Tri-Clamp in operating position



Information on operation

- Operation with compressed air only for short-term usage. Operation above the recommended operating pressure means higher wear and smaller droplets. This might have adverse effects on the cleaning result.